

ART PROGRAM

2026

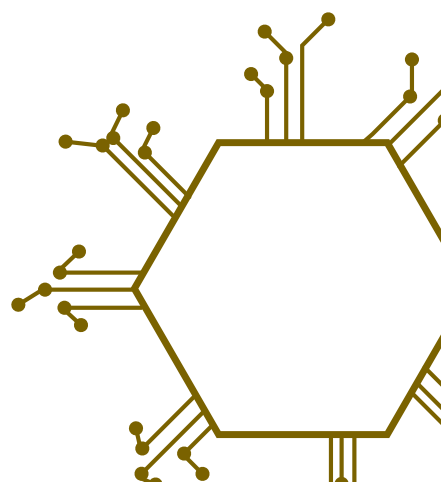
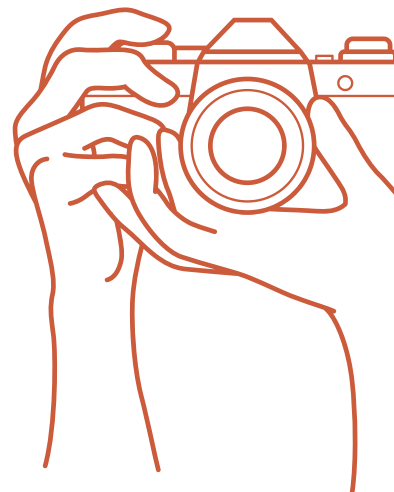


The Glenelg Libraries Art Program is open to all ages, abilities, and artists of all levels of experience.

Most of our exhibitions are open to all media types, including drawing, painting, sculpture, mixed media, textiles and photography. In 2026 we'd like to do our best to accommodate digital formats and even writing! So if you have something in mind, please give us a call and we can discuss your project to see if it can be included.

To participate in the exhibitions, bring your artwork to your library branch at Portland, Heywood or Casterton by the due date, and complete an entry form to leave with your artwork.

Works will be displayed at the Portland Library, then a selection will be displayed at Casterton and Heywood Libraries (depending on space limitations) in the months following.



FLOWER TO FORM

9 February - 28 March

Take the challenge of creating abstraction from natural forms and let the glorious colours of the dahlia inspire your work.

Step 1 - Colour palette

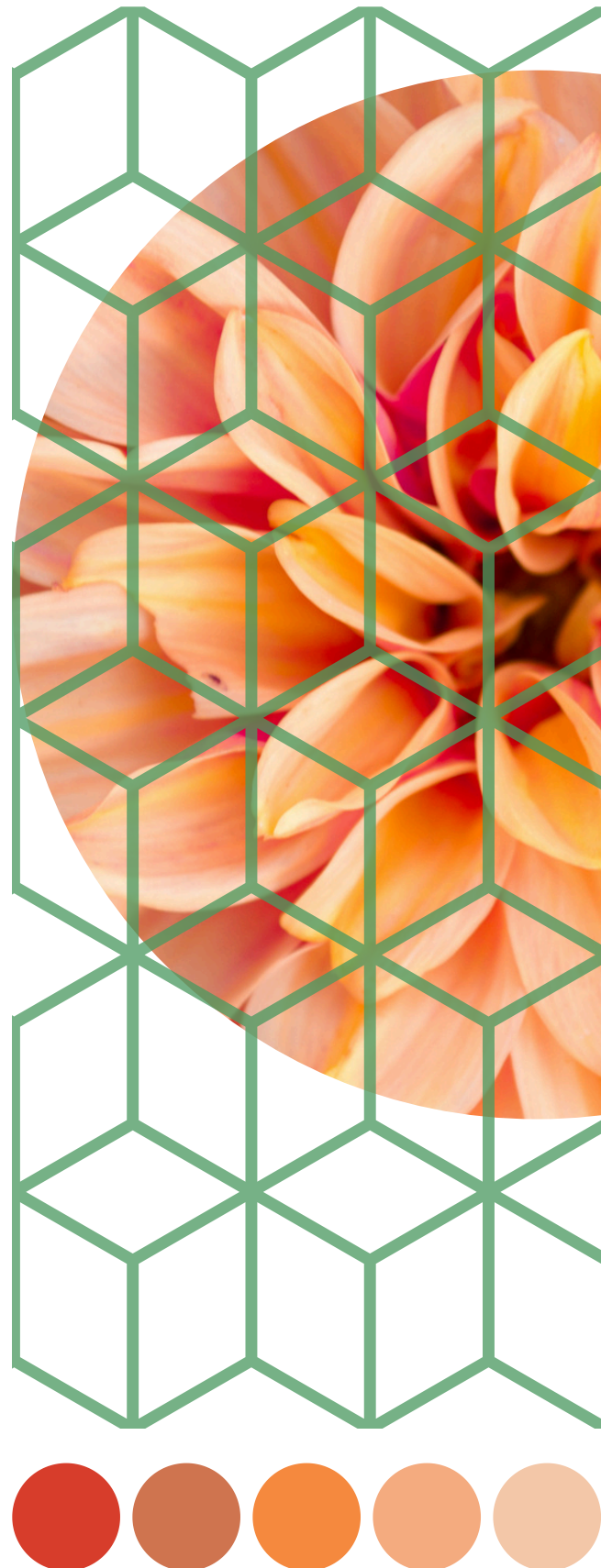
Create a colour palette based on a dahlia variety of your choice.

- Go freestyle, pick out some colours based on your chosen dahlia.
- Or, generate one online using a photo of your dahlia. (free at Adobe Color (choose Extract Theme)).

Step 2 - Abstraction

Transform colour into form. Create an abstract artwork using only geometric shapes and lines. Push yourself out of your comfort zone. Play with balance, shades, texture, tone, line, contrast.

Entries to be delivered to your Library branch by 2 February 2026



METALLIC

6 April - 30 May

Metallic is a theme that invites exploration of strength, beauty, and transformation. Think of the brilliance of polished silver, the warmth of copper, the resilience of steel, and the timeless shimmer of gold. They reflect light in ways that can be bold and industrial, soft and luminous, or futuristic and abstract.

- Textures and Technique: Artists can experiment with reflective surfaces, embossed patterns, or mixed media that mimic the tactile qualities of metal.
- Symbolism and Storytelling: Metals carry cultural and emotional weight—gold as a symbol of wealth and divinity, steel as a marker of strength and progress, copper as a conduit of energy and warmth.
- Colour and Contrast: Metallic tones can create striking contrasts with organic materials, vibrant pigments, or matte finishes, offering dynamic visual narratives.
- Exploring concepts: “Metallic” can represent transformation—raw ore becoming refined beauty—or resilience, echoing the strength of communities and the brilliance of shared creativity.

All media welcome.

**Entries to be delivered to your Library by
30 March 2026**





COCKATOO

8 June - 31 July

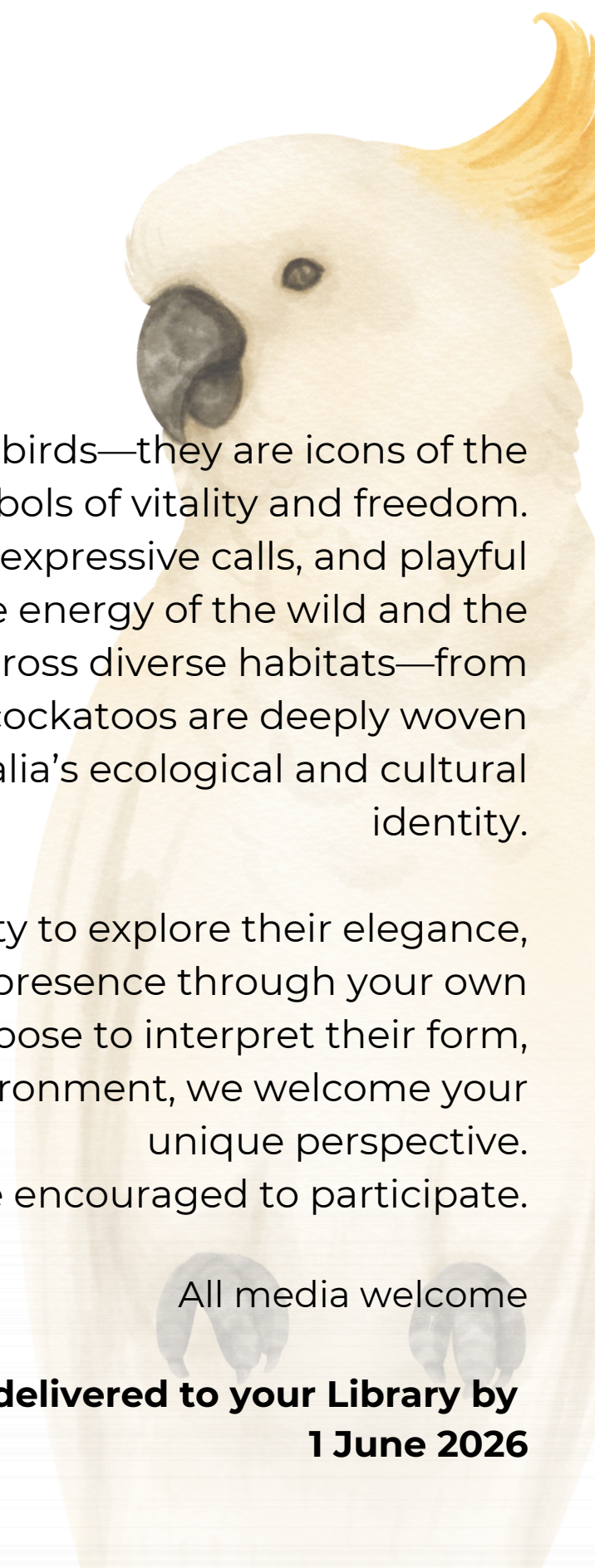
Cockatoos are more than birds—they are icons of the Australian landscape, symbols of vitality and freedom. With their striking crests, expressive calls, and playful intelligence, they embody the energy of the wild and the resilience of nature. Found across diverse habitats—from coastal forests to arid plains—cockatoos are deeply woven into our local, and Australia's ecological and cultural identity.

This theme offers an opportunity to explore their elegance, intelligence, and vibrant presence through your own creative lens. Whether you choose to interpret their form, their symbolism, or their environment, we welcome your unique perspective.

All ages and abilities are encouraged to participate.

All media welcome

**Entries to be delivered to your Library by
1 June 2026**





DUNE

10 August - 26 September

We invite artists and creators to bring Frank Herbert's legendary science fiction epic to life through visual art. Celebrating the novel's rich themes—ecology, survival, power, and transformation—while embracing its unforgettable characters, cultures, and landscapes.

From the sweeping deserts and colossal sandworms to the mysteries of spice and the resilience of its people, Dune offers endless inspiration. Whether you work in abstraction or realism, this is your chance to interpret one of the most influential stories of our time and share your vision of its universe.

All media welcome.

**Entries to be delivered to your
Library by 3 August 2026**



SUN

5 October - 28 November

The Sun is more than a source of light—it is the engine of life, warmth, and energy for our planet. Every second, it releases an astonishing 3.8×10^{26} watts of power, sustaining ecosystems and driving the cycles that make Earth habitable. Its gravity holds our solar system together, while its radiant energy fuels photosynthesis, the foundation of all life. From the golden glow of dawn to the fiery blaze of midday, the Sun symbolizes renewal, brilliance, stability and endurance. It invites endless interpretations—whether through the interplay of light and shadow, the vibrancy of colour and texture, or the emotions it evokes.

This theme offers an opportunity to explore its many dimensions: the science behind its power, the artistry of its light, and the profound connection we share with this star that makes life possible.

All media welcome.

**Entries to be delivered to your Library by
28 September 2026**

GINGERBREAD

7 December - 10 January 2027



Gingerbread houses originated in 16th-century Germany and became popular after the Brothers Grimm published *Hansel and Gretel* in 1812. What began as a festive treat has evolved into a global tradition—symbolising creativity and craftsmanship. Now, we're taking it one step further: turning gingerbread houses into artistic expressions that celebrate imagination and community.

We invite you to reimagine the classic gingerbread house as a work of art, using cardboard and sustainable materials instead of traditional sweets.

Entries to be delivered to your Library by 30 November 2026

